

ACTIVITIES & CLUBS

Art Club, beach clean-ups, Builder's Club, Cordgrass Restoration Projects, exotic plant eradication, Mad Beach Steppers, Marine Environment Club, Multicultural Committee, National Junior Honor Society, Science Club, sports (volleyball, basketball, track, cheerleading), Storytelling Festival, Student Council, Technology Student Association, Unclub, Writers Club and yearbook

COMMUNITY INVOLVEMENT AND PARTNERSHIPS

- Parent-Teacher-Student Association (PTSA)
- School Advisory Council (SAC)
- Partnerships: Florida Fish and Wildlife Research Institute, Southwest Florida Water Management District, College of Education at St. Petersburg College, National Marine Fisheries, Florida Institute of Oceanography, Tampa Bay Watch, Publix, Hubbard's Marina and 52 other civic-minded community partners
- Sun safety signage at local beach access points
- Oyster reef balls, mangrove seedlings and salt grass community restoration projects

SCHOOL MISSION

As a marine theme school, we will promote a standard of excellence for learning, which enables students to grow into creative, productive and contributing members of society.



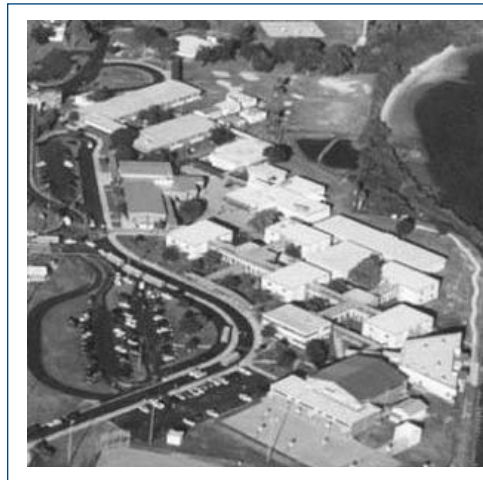
www.pcsb.org

301 Fourth St. SW
P.O. Box 2942
Largo, FL 33779-2942

School Board of Pinellas County

Nancy N. Bostock
Mary L. Tyus Brown
Janet R. Clark
Carol J. Cook
Jane Gallucci
Linda S. Lerner
Peggy L. O'Shea

Julie M. Janssen, Ed.D.
Superintendent



The School Board of Pinellas County, Florida, prohibits any and all forms of discrimination and harassment based on race, color, sex, religion, national origin, marital status, age, sexual orientation or disability in any of its programs, services or activities.

Brochure information is subject to change.

Madeira Beach

MIDDLE SCHOOL

2008-2009



591 MADEIRA BEACH CAUSEWAY
MADEIRA BEACH, FL 33708
PHONE: (727) 547-7697
FAX: (727) 547-7528

WWW.MB-MS.PINELLAS.K12.FL.US

QUICK facts

Principal: Brenda Poff

Grade Levels: 6-8

Enrollment: 1,078

School Hours: 9:38 a.m.-4:12 p.m.

Attractor/focus: Marine environmental theme, fundamental-like traditional program

Before/after-school care: No

Average Class Size: District average class size complies with the class-size reduction amendment with “core” academic courses for middle school at 22:1.

Teaching Staff: Approximately 40 percent of faculty members have advanced degrees.

Exceptional Student Education:

Full time: Independent Varying Exceptionalities (IVE), Supported Varying Exceptionalities (SVE)

Part time: Varying Exceptionalities (VE), Speech Impaired (SI), Language Impaired (LI), Deaf/Hard of Hearing (DHH), Visually Impaired (VI), Occupational Therapy (OT), Physical Therapy (PT) and Gifted

English for Speakers of Other Languages (ESOL) Program: No

Academic Information: Visit www.pinellas.k12.fl.us/schools

Computers and Technology: Technology coordinator, business lab, curriculum lab, four portable labs, four reading labs, two math labs and one synergistic lab

SCHOOL BACKGROUND

Come get your feet wet at Madeira Beach Middle School. The school’s unique educational setting, directly on Boca Ciega Bay, inspired school efforts in 1993 to develop a marine environmental theme to supplement the established curriculum. The dream of an outdoor living classroom captured the imagination of many community members and environmental advocates. Generous gifts of time, energy and money enabled a dream to come true. Today the most popular classroom at Madeira Beach Middle School is outdoors!

SCHOOL HIGHLIGHTS

- An 18-acre waterfront open-air campus includes three wetland ecosystems, boardwalk, dock, lagoon habitat, artificial reefs, a wetland nursery, wet lab, tank room, xeriscape gardens and demonstration aquaria
- Reading emphasis includes Reading Counts! (recreational reading), Battle of the Books, Bookarama, Read 180, For the Love of Reading or Poetry Night and two book fairs a year

POINTS OF PRIDE

- Received the Hewlett-Packard Technology for Teaching grant
- Florida Bandmasters Association Music Performance Assessment – superior ratings for solo & ensemble, jazz, intermediate & advanced bands 2003-2008
- All-County Honor Band, 2003-2008
- Featured on *Student Measures*, 2005-2008
- Music Performance Assessment – chorus, superior and excellent ratings, 2003-2008
- Florida Vocal Assoc. Solo & Ensemble – eight superior solos and three superior quartets, 2007
- All-County Honor Choir – 20 students selected for 2008
- All-State Honor Choir – four students selected for 2008
- District Bookarama – first place, 2007, fourth place, 2008
- Battle of the Books – third place, 2006/2007
- Madeira Beach Veterans of Foreign Wars Patriot’s Pen essay contest – first and second place, 2006-2007
- Educational Media Awards (EMA) – 29 finalists, 2007-2008
- Technology Student Association State Conference – seven finalists, 2003-2007
- Received a Toshiba America Grant for Math & Science
- Finalist in Economics Quiz Bowl

CURRICULUM

- Core courses: language arts, math, science and social studies
- Other required courses in various grades: reading, physical education, health, intensive math and reading
- Elective courses: band, chorus, Spanish, computers, art, marine docent, marine life, marine environment, video production, tech education and business education
- High school credit classes in math, science and Spanish
- Advanced science, math and language arts at all levels
- Gifted education elective for eligible students

SPECIAL SERVICES AND PROGRAMS

- ParentCONNECTxp, a home-to-school connection via the Internet
- DOORWAYS scholarships
- Positive Behavior Support Program enhances students’ success.
- Learning For Life Program teaches students expected behaviors and social skills.
- Tampa Bay Watch Wetland Nursery Program & oyster dome project
- Weekly voice messages of general announcements to home phones